

KERNOW **J E T**®

INTERIORS



**THE
PROFESSIONAL
CHOICE**
for creative, tough
wallcoverings

Certified for
HP Latex Inks

White embossed printable wallcoverings
with a non-woven backing

KERNOW JET®

INTERIORS

KernowJet INTERIORS is the ideal solution for creative and robust wall art. Create unique, customized and decorative murals and wallcoverings for any space.



Perfect for adding custom environments to any location:

Hotels & conference centers

Retail spaces & POS

Offices & breakrooms

Schools & universities

Hospitals & clinics

Transportation & travel facilities

Product features include:

Designed for tough environments

Easy application

Water resistant and washable

Removable without residue

Optimal printing on WF inkjet printers

Bio-Pruf® and fire rated

KernowJet INTERIORS is just one part of the Kernow wide-format range. Discover many other solutions at www.kernowna.com.

Stock Items

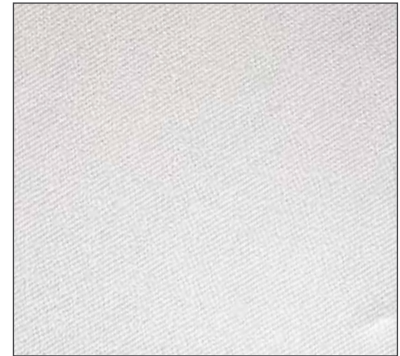
KernowJet INTERIORS 500



Smooth Touch 500



Light Canvas 500

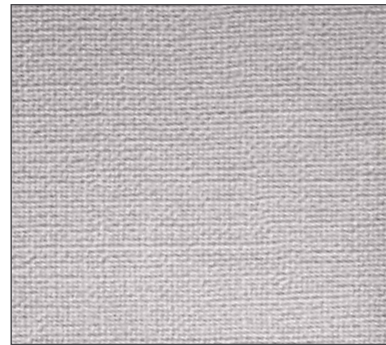


Linnen 500

KernowJet INTERIORS 620



Light Touch 620



Canvas 620

On Demand

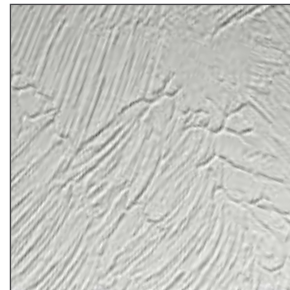
MOQ 1 roll for KernowJet INTERIORS 500 / 2000 lm MOQ for KernowJet INTERIORS 620



Sand



Dust



Brush



Porcelain



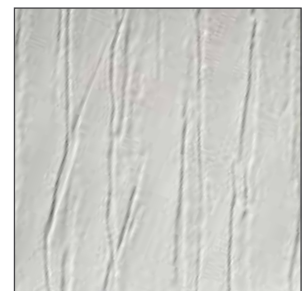
Façade



Rustique



Parchment



Bamboo

TECHNICAL SPECS AND INFORMATION

Roll length	Stock items 100 feet / 30.5 m On demand KernowJet INTERIORS 500: 164 feet / 50 m On demand KernowJet INTERIORS 620: 100 feet / 30.5 m
Construction	Non-woven substrate with topcoated vinyl
Properties	Special top coating developed for optimal printing with all common WF-inkjet inks Easy and fast application, paste the wall, not the printed wallpaper Removable without residue
Bio-Pruf®	Special treatment inhibits the growth of bacteria and mold
Washable	Can be washed after printing with mild detergent and a damp cloth. Please read the installation recommendations!
Resistance prior to printing	Chemicals such as soap, detergents, alcohol, ammonia, alkali, diluted acids
Adhesives	Contact your sales representative for more information
Compliant	Compliant to EN 259 -2
Safety/ Ecological	Material is classified as non-hazardous DIN 52900 or 91/155/EEG,2001/58/EC
Fire resistance	KernowJet INTERIORS 500: Euro class B s1 d0 Class 0 / 1 BS 476 part 6/7 M1 NF P 92501 / 92507 B1 DIN 4102 - 01 ABP Number: P-MPA-E-04-507 KernowJet INTERIORS 620: ASTM Test-Method E84 - 15a
Lightfastness	≥ 7 International Woolscale BS EN 20105 / ISO 105-B02
Installation	Full instructions inside the core of each roll and on www.kernowna.com

Certified for
HP Latex Inks

KernowJet INTERIORS 500

~500
μ

~20
mil

350
±gsm

KernowJet INTERIORS 620

~620
μ

~24.4
mil

450
±gsm

51.2
inch

1300
mm

Eco
Solvent

UV

Latex



Interiors 500

Non-woven printable wallcoverings

KERNOWJET®

INTERIORS

Applications

Customised wallcoverings for tough environments including POS, retail stores, hotels, schools, offices and hospitals

Certified for
HP Latex Inks



Marabu

Benefits

- Easy handling and fast application - paste the wall not the wallcovering
- Removable - dry without residues or damage to the walls
- Perfect dimensional stability - zero shrinkage for perfect seams
- Washable using mild soap and a sponge or cloth
- Breathable and Bio-Pruf®: inhibits the growth of micro-organisms such as bacteria and mould
- Non-woven substrate with top-coated vinyl
- Fire rated: Euro class B s1d0, M1 and B1
- Certified to work with ClearShield Wall Armor for additional stain, scratch and abrasion resistance
- Check the swatch book and literature for the 13 different embossing patterns

Please read the installation instruction before applying.

Post Printing Information for Solvent Inks:

As with all filmic media, this product must be allowed to "gas-out" after solvent printing. This can be achieved by leaving the prints face up, ideally 24 hours. If unable to do this e.g. with a long print run, after printing the roll stand it vertically and loosely unwind as much as possible, to allow air in and solvent out.

Recommended Conditions:

Printroom	15°C - 30°C	30% - 65% RH
Usage	-40°C - 80°C	10% - 90% RH
Storage	10°C - 20°C	20% - 50% RH

Printability:



Thickness:



Available widths:



www.bciimage.com

866 971-1008

Interiors 620

Ultra-resistant non-woven printable wallcoverings

Applications

Customised wallcoverings for very tough environments including POS, retail stores, hotel corridors, schools, offices and hospitals

Benefits

- Easy and fast application - paste the wall not the wallcovering
- Removable dry - without residues or damage to the walls
- Perfect dimensional stability - zero shrinkage for perfect seams
- Washable using mild soap and a sponge or cloth
- Breathable and Bio-Pruf®: inhibits the growth of micro-organisms such as bacteria and mould
- Non-woven substrate with top-coated vinyl
- Fire rated: ASTM Test-Method E84 - 15a
- Certified to work with ClearShield Wall Armor for additional stain, scratch and abrasion resistance
- Check the sample card for the two standard and eight on-demand embossing patterns

Please read the installation instruction before applying

Post Printing Information for Solvent Inks:

As with all filmic media, this product must be allowed to "gas-out" after solvent printing. This can be achieved by leaving the prints face up, ideally 24 hours. If unable to do this e.g. with a long print run, after printing the roll stand it vertically and loosely unwind as much as possible, to allow air in and solvent out.

Recommended Conditions:

Printroom	15°C - 30°C	30% - 65% RH
Usage	-40°C - 80°C	10% - 90% RH
Storage	10°C - 20°C	20% - 50% RH

Certified for
HP Latex Inks



Marabu



Printability:



Thickness:



Available widths:



The informatio
users make the



www.bciimage.com

866 971-1008

Product	Eco Solvent ✓✓✓	Latex Certified for HP Latex Inks	UV ✓✓✓	MOQ	KNA Code	Width Available	Roll Length	Weight lbs	Core Size
Interiors 500 Non-Woven Printable Wallcoverings - 500 µ - 20.0 mils, 350 gsm Smooth Texture	✓✓✓	Certified for HP Latex Inks	✓✓✓		SW500STO-24	24"	10'	2.0	3"
					W500STO-51.2	51.2"	100'	31.6	3"
Interiors 500 Non-Woven Printable Wallcoverings - 500 µ - 20.0 mils, 350 gsm Light Canvas Texture	✓✓✓	Certified for HP Latex Inks	✓✓✓		SW500CAN-24	24"	10'	2.0	3"
					W500CAN-51.2	51.2"	100'	31.6	3"
Interiors 500 Non-Woven Printable Wallcoverings - 500 µ - 20.0 mils, 350 gsm Linnen Texture	✓✓✓	Certified for HP Latex Inks	✓✓✓		SW500LIN-24	24"	10'	2.0	3"
					W500LIN-51.2	51.2"	100'	31.6	3"
Interiors 500 Non-Woven Printable Wallcoverings - 500 µ - 20.0 mils, 350 gsm Sand Texture	✓✓✓	Certified for HP Latex Inks	✓✓✓		SW500SAN-24	24"	10'	2.0	3"
					W500SAN-51.2-164	51.2"	164'	51.5	3"
Interiors 500 Non-Woven Printable Wallcoverings - 500 µ - 20.0 mils, 350 gsm Dust Texture	✓✓✓	Certified for HP Latex Inks	✓✓✓		SW500DUS-24	24"	10'	2.0	3"
					W500DUS-51.2-164	51.2"	164'	51.5	3"
Interiors 500 Non-Woven Printable Wallcoverings - 500 µ - 20.0 mils, 350 gsm Brush Texture	✓✓✓	Certified for HP Latex Inks	✓✓✓		SW500BRU-24	24"	10'	2.0	3"
					W500BRU-51.2-164	51.2"	164'	51.5	3"
Interiors 500 Non-Woven Printable Wallcoverings - 500 µ - 20.0 mils, 350 gsm Porcelain Texture	✓✓✓	Certified for HP Latex Inks	✓✓✓		SW500POR-24	24"	10'	2.0	3"
					W500POR-51.2-164	51.2"	164'	51.5	3"
Interiors 500 Non-Woven Printable Wallcoverings - 500 µ - 20.0 mils, 350 gsm Façade Texture	✓✓✓	Certified for HP Latex Inks	✓✓✓		SW500FAC-24	24"	10'	2.0	3"
					W500FAC-51.2-164	51.2"	164'	51.5	3"
Interiors 500 Non-Woven Printable Wallcoverings - 500 µ - 20.0 mils, 350 gsm Rustique Texture	✓✓✓	Certified for HP Latex Inks	✓✓✓		SW500RUS-24	24"	10'	2.0	3"
					W500RUS-51.2-164	51.2"	164'	51.5	3"
Interiors 500 Non-Woven Printable Wallcoverings - 500 µ - 20.0 mils, 350 gsm Parchment Texture	✓✓✓	Certified for HP Latex Inks	✓✓✓		SW500PAR-24	24"	10'	2.0	3"
					W500PAR-51.2-164	51.2"	164'	51.5	3"
Interiors 500 Non-Woven Printable Wallcoverings - 500 µ - 20.0 mils, 350 gsm Bamboo Texture	✓✓✓	Certified for HP Latex Inks	✓✓✓		SW500BAM-24	24"	10'	2.0	3"
					W500BAM-51.2-164	51.2"	164'	51.5	3"

Product	Eco Solvent ✓✓✓	Latex Certified for HP Latex Inks	UV ✓✓✓	MOQ	KNA Code	Width Available	Roll Length	Weight lbs	Core Size
Interiors 620 Ultra-Resistant Non-Woven Printable Wallcoverings - 620 µ - 24.4 mils, 450 gsm Light Touch Texture	✓✓✓	Certified for HP Latex Inks	✓✓✓		SW620LTO-24	24"	10'	2.3	3"
					W620LTO-51.2	51.2"	100'	39.7	3"
Interiors 620 Ultra-Resistant Non-Woven Printable Wallcoverings - 620 µ - 24.4 mils, 450 gsm Canvas Texture	✓✓✓	Certified for HP Latex Inks	✓✓✓		SW620CAN-24	24"	10'	2.3	3"
					W620CAN-51.2	51.2"	100'	39.7	3"
Interiors 620 Ultra-Resistant Non-Woven Printable Wallcoverings - 620 µ - 24.4 mils, 450 gsm Sand Texture	✓✓✓	Certified for HP Latex Inks	✓✓✓	40	W620SAN-51.2	51.2"	100'	39.7	3"
Interiors 620 Ultra-Resistant Non-Woven Printable Wallcoverings - 620 µ - 24.4 mils, 450 gsm Dust Texture	✓✓✓	Certified for HP Latex Inks	✓✓✓	40	W620DUS-51.2	51.2"	100'	39.7	3"
Interiors 620 Ultra-Resistant Non-Woven Printable Wallcoverings - 620 µ - 24.4 mils, 450 gsm Brush Texture	✓✓✓	Certified for HP Latex Inks	✓✓✓	40	W620BRU-51.2	51.2"	100'	39.7	3"
Interiors 620 Ultra-Resistant Non-Woven Printable Wallcoverings - 620 µ - 24.4 mils, 450 gsm Porcelain Texture	✓✓✓	Certified for HP Latex Inks	✓✓✓	40	W620POR-51.2	51.2"	100'	39.7	3"
Interiors 620 Ultra-Resistant Non-Woven Printable Wallcoverings - 620 µ - 24.4 mils, 450 gsm Façade Texture	✓✓✓	Certified for HP Latex Inks	✓✓✓	40	W620FAC-51.2	51.2"	100'	39.7	3"
Interiors 620 Ultra-Resistant Non-Woven Printable Wallcoverings - 620 µ - 24.4 mils, 450 gsm Rustique Texture	✓✓✓	Certified for HP Latex Inks	✓✓✓	40	W620RUS-51.2	51.2"	100'	39.7	3"
Interiors 620 Ultra-Resistant Non-Woven Printable Wallcoverings - 620 µ - 24.4 mils, 450 gsm Parchment Texture	✓✓✓	Certified for HP Latex Inks	✓✓✓	40	W620PAR-51.2	51.2"	100'	39.7	3"
Interiors 620 Ultra-Resistant Non-Woven Printable Wallcoverings - 620 µ - 24.4 mils, 450 gsm Bamboo Texture	✓✓✓	Certified for HP Latex Inks	✓✓✓	40	W620BAM-51.2	51.2"	100'	39.7	3"