

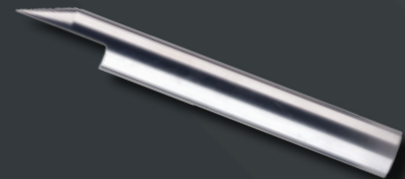


www.bciimage.com

866-971-1008



ROUTING &
ENGRAVING
BITS



 **GERBER**
TECHNOLOGY



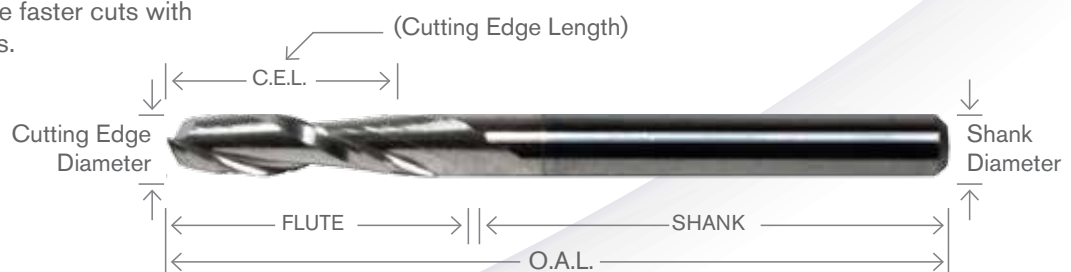
www.bciimage.com

866-971-1008

Gerber Technology offers a complete line of the finest router, engraving and ADA bits in the industry. Each of our bits are carefully crafted for precision and durability. Specially engineered for a wide range of materials, these cutters will deliver the highest performance possible, to meet or exceed your demanding expectations.

HOW TO SELECT THE PROPER CUTTER LENGTH

When choosing a bit for a particular job, be sure to select one with a CUT LENGTH that is as short as possible, but still long enough to go all the way through the material. This will minimize vibration and enable faster cuts with better edge finishes.





www.bciimage.com

866-971-1008



Our premium series of routing bits are optimized for your specific application. These competitively priced bits cut cleaner, faster, quieter, and last longer. These high performance bits can be used with all Gerber routers and engravers, as well as with other router systems.

Made from high-quality, sub-micrograin carbide, these bits are fashioned using a unique geometry. This reduces the need to change tools when routing a variety of materials requiring the same tool diameter.



GERBER PLATINUM ALUMINUM & WOOD

One Flute Upcut O Flute



Materials:
Alucobond®, Dibond®, Dilite®,
Hardwood, Softwood, Non-Ferrous
Metals (Aluminum, Brass, Copper)

Application Code = AW

GERBER'S APPLICATION CODE SYSTEM

Gerber takes the guesswork out of choosing the correct bit. The application code is etched into the shank of the bit, along with the part number for easy identification.

APS	All Purpose Straight	SPF	Soft Plastic & Foams
APC	All Purpose Cleanout	GP	General Purpose
AW	Aluminum & Wood		
F	Foams		
FT	Folding Tool		
HPF	Hard Plastic & Foams		
LV	Laminates & Veneers		

PART # ENGLISH	SHANK DIAMETER	CUTTING DIAMETER	CUTTING EDGE LENGTH	OVER ALL LENGTH
P79820A	1/8"	1/16"	1/4"	1-1/2"
P79821A	1/8"	1/8"	1/4"	1-1/2"
P79822A	1/4"	3/16"	3/8"	2"
P79823A	1/4"	1/4"	3/8"	2"
P79824A	1/4"	1/4"	3/4"	2-1/2"
P80307A	3/8"	3/8"	3/4"	3"



GERBER PLATINUM GENERAL PURPOSE

One Flute Upcut Super O Flute



Materials:
Hard and Soft Plastic, Hard and Soft Woods,
Wood and Plastic Composites

Application Code = GP

PART # ENGLISH	SHANK DIAMETER	CUTTING DIAMETER	CUTTING EDGE LENGTH	OVER ALL LENGTH
P79825A	1/4"	1/8"	1/2"	2"
P79826A	1/4"	3/16"	5/8"	2"
P79827A	1/4"	3/16"	1-1/4"	3"
P79828A	1/4"	1/4"	5/8"	2"
P79829A	1/4"	1/4"	7/8"	2-1/2"
P79830A	1/4"	1/4"	1-1/2"	3"
P80300A	1/4"	1/8"	1-1/8"	2-1/2"
P80356A	1/8"	1/16"	1/4"	2"
P80301A	3/8"	3/8"	1-1/8"	3"

**GERBER PLATINUM****HARD PLASTIC & FOAM**

One Flute Upcut O Flute



Materials:

Solid Surface (Avonite™, Corian®),

Cast Acrylic

Application Code = HPF

PART # ENGLISH	SHANK DIAMETER	CUTTING DIAMETER	CUTTING EDGE LENGTH	OVER ALL LENGTH
P80340A	1/4"	1/16"	1/4"	2"
P80341A	1/4"	1/8"	1/2"	2"
P80342A	1/4"	3/16"	5/8"	2"
P80343A	1/4"	1/4"	3/4"	2-1/2"
P80344A	1/4"	1/8"	1/4"	2"
P80345A	1/4"	3/16"	3/8"	2"
P80346A	1/4"	1/4"	1/2"	2"
P80347A	1/4"	3/16"	1-1/8"	2-1/2"
P80348A	1/4"	1/8"	1-1/8"	2-1/2"
P80370A	1/4"	1/4"	1-1/2"	3"

**GERBER PLATINUM****SOFT PLASTIC & FOAM**

One Flute Upcut O Flute



Materials:

PVC Foam (Celtec®, Trovicel®, Sintra®,

Kometex®), HDU (Signfoam®, Precision

Board™), Extruded Acrylic, Styrene,

Polycarbonate (Lexan®), HDPE (Polycarve™)

Application Code = SPF

PART # ENGLISH	SHANK DIAMETER	CUTTING DIAMETER	CUTTING EDGE LENGTH	OVER ALL LENGTH
P80363A	1/4"	1/8"	1/4"	2"
P80364A	1/4"	1/4"	3/4"	2-1/2"
P80362A	1/4"	3/16"	3/8"	2"
P80365A	1/4"	3/16"	5/8"	2"
P80366A	1/4"	1/8"	1/2"	2"
P80367A	1/4"	1/16"	1/4"	2"
P80368A	1/4"	1/4"	1-1/2"	3"

**GERBER PLATINUM****LAMINATES & VENEERS**

Materials:

Hardwood, Softwood, Wood Composites

(MDO, MDF, Plywood, Particle Board)

Produces clean top & bottom edges on single
& double-sided laminated substrates.

Application Code = LV

DESCRIP- TION	PART # ENGLISH	SHANK DIAMETER	CUTTING DIAMETER	CUTTING EDGE LENGTH	OVER ALL LENGTH
One Flute Compression	P80302A	1/4"	1/8"	3/8"	2-1/2"
	P80303A	1/4"	3/16"	5/8"	2-1/2"
Two Flute Compression	P80304A	1/4"	1/4"	7/8"	2-1/2"
	P80305A	3/8"	3/8"	7/8"	3"
	P80306A	3/8"	3/8"	1-1/8"	3"



GERBER PLATINUM

ALL PURPOSE STRAIGHT

One Flute Straight



Materials:

Substrates with thin laminates, foam boards, clay coated paper & styrene surfaces (Fome-Cor®, Gatorfoam®, Gatorplast®)

Application Code = APS



www.bciimage.com

866-971-1008

PART #	SHANK DIAMETER	CUTTING DIAMETER	CUTTING EDGE LENGTH	OVER ALL LENGTH
P80336A	1/4"	1/8"	1/2"	2"
P80337A	1/4"	3/16"	5/8"	2"
P80338A	1/4"	1/4"	3/4"	2-1/2"
P80339A	1/4"	1/4"	1-1/4"	4"



GERBER PLATINUM

FOAMS

Two Flute Upcut



Materials:

Specially designed for thick foams and soft plastics from 1-1/4" to 2-1/4". HDU (Precision Board™, Signfoam®)

Application Code = F

PART # ENGLISH	SHANK DIAMETER	CUTTING DIAMETER	CUTTING EDGE LENGTH	OVER ALL LENGTH
P80349A	1/4"	1/4"	1-1/4"	3"
P80350A	1/4"	1/4"	2-1/4"	4"
P80351A	3/8"	3/8"	1-1/2"	4"
P80160B	1/4"	1/4"	2-1/4"	3-1/2"



Diamond Cut - P80160B



GERBER PLATINUM

ALL PURPOSE CLEAN-OUT

Two Flute Upcut Bottom Surfacing



Materials:

HDPE (Polycarve™), Aluminum, Woods, Solid Surface

Produces a clean bottom finish with a .002" radius inside bottom edge.

Application Code = APC

PART # ENGLISH	SHANK DIAMETER	CUTTING DIAMETER	CUTTING EDGE LENGTH	OVER ALL LENGTH
P80358A	1/8"	1/8"	1/4"	2"
P80359A	1/4"	1/4"	3/8"	2"
P80360A	3/8"	3/8"	5/8"	2-1/2"



GERBER PLATINUM

FOLDING TOOL

Two Flute Straight V Flute V Bottom



Materials:

Carbide tipped specialty bit designed for folding Alucobond®, Dibond®, Dilite® up to 90-degrees

Application Code = FT

PART # ENGLISH	SHANK DIAMETER	CUTTING DIAMETER	CUTTING EDGE LENGTH	OVER ALL LENGTH
P80361A	1/4"	1/2"	3/8"	2"



www.bciimage.com

866-971-1008



GERBER PLATINUM

3D MODELING

Two Flute Upcut Ballnose



Materials:

Advanced grind technology produces a superior cut in Plastics, Solid Surfaces, Aluminum, Woods

Ballnose bit designed for three-dimensional modeling.

Application Code = 3D

PART # ENGLISH	SHANK DIAMETER	CUTTING DIAMETER	CUTTING EDGE LENGTH	OVER ALL LENGTH
P80352A	1/8"	1/8"	1/2"	2"
P80353A	1/4"	3/16"	3/4"	2"
P80355A	3/8"	3/8"	1-1/8"	3"



GERBER PLATINUM

FOR PROFILE SERIES



DESCRIP- TION	PART # ENGLISH	SHANK DIAME- TER	CUTTING DIAME- TER	CUTTING EDGE LENGTH	OVER ALL LENGTH
2-Flute Straight	P72975B	1/4"	1/4"	1/2"	2"
	P72976B	1/8"	1/8"	1/2"	2-1/2"
	P72977B	1/4"	1/4"	3/4"	2-1/2"
1-Flute Radial	P72259B	1/4"	1/4"	3/4"	2-1/2"
	P73832B	1/8"	1/8"	3/4"	2"
Spiral	P74596B	3/16"	3/16"	3/4"	2-1/2"

Materials:

Hardwood, Softwood, Wood Composites (MDO, MDF, Plywood, Particle board)

GERBER GOLD™ ROUTING BITS

Gerber Gold routing bits are designed for greater performance and longer tool life. These remarkable routing bits are made from the highest quality micro-grain carbide to the tightest tolerances in the industry. The bits are coated with titanium nitride to enhance their durability even further. The result is superior edge quality and lower tooling costs.



GERBER GOLD TWO-FLUTE SPIRAL

Versatile General Routing



Hard Materials:

Plate Aluminum, Brass, Bronze, Copper, Cast Acrylics, Solid Surface Materials, Particleboard, Plywood, and Hardwoods

Soft Materials:

Foam Boards, Engraving Stock, PVC, Soft Plastics, Low Density Woods, and other similar density materials

Two-flute spiral bits provide excellent chip removal from the cut because of the upward spiral action.

PART # ENGLISH	SHANK DIAMETER	CUTTING DIAMETER	CUTTING EDGE LENGTH	OVER ALL LENGTH
P50521B	1/8"	1/16"	3/16"	1-1/2"
P50525B	1/8"	1/8"	1/4"	1-1/2"
P50522B	1/8"	1/8"	1/2"	1-1/2"
P50526B	1/4"	3/16"	3/8"	2"
P50523B	1/4"	3/16"	5/8"	2"
P50528B	1/4"	3/16"	1-1/8"	3"
P50527B	1/4"	1/4"	1/2"	2"
P50524B	1/4"	1/4"	3/4"	2-1/2"
P50529B	1/4"	1/4"	1-1/2"	3"
P50530B	1/4"	1/4"	2-1/4"	3-3/4"
P52819B	1/8"	1/8"	1-1/4"	3"
PART # METRIC	SHANK DIAMETER	CUTTING DIAMETER	CUTTING EDGE LENGTH	OVER ALL LENGTH
P52262B	3 mm	1.6 mm	4.5 mm	38 mm
P50903B	3 mm	3 mm	6 mm	38 mm
P50902B	3 mm	3 mm	12 mm	38 mm
P52261B	6 mm	4.5 mm	16 mm	50.8 mm
P52259B	6 mm	4.5 mm	30 mm	63.5 mm
P50900B	6 mm	6 mm	12 mm	50.8 mm
P50901B	6 mm	6 mm	19 mm	50.8 mm
P52365B	6 mm	6 mm	40 mm	75 mm



GERBER GOLD SINGLE-FLUTE RADIAL

Single Straight Cutting Edge



For Aluminum, Brass .060 (1.5 mm) or less, as well as Soft Woods and Soft Alloy Aluminum.

Single-flute radial bits have a single, straight cutting edge so the bits do not pull up on the work piece. This allows the bit to "shear" the chip off at the top edge of the material without leaving a burr.

PART # ENGLISH	SHANK DIAMETER	CUTTING DIAMETER	CUTTING EDGE LENGTH	OVER ALL LENGTH
P50533B	1/4"	3/16"	5/8"	2"
P50534B	1/4"	1/4"	3/4"	2-1/2"
P50535B	1/4"	1/4"	1-1/2"	3-1/2"
PART # METRIC	SHANK DIAMETER	CUTTING DIAMETER	CUTTING EDGE LENGTH	OVER ALL LENGTH
P52256B	6 mm	3 mm	12 mm	50 mm



GERBER GOLD THREE-FLUTE SPIRAL TAPERED

Produces Angle on Edge of Material



Ideal for Cutting: Vacuum form molds or creating a "halo" effect without adding any additional cost.

Three-flute spiral bits can be used on the same materials as the two-flute spiral bits.

PART # ENGLISH	SHANK DIAMETER	CUTTING DIAMETER	CUTTING EDGE LENGTH	OVER ALL LENGTH	DEGREE
P50531B	1/4"	1/8"	1/2"	1-7/8"	7°
P50643B	1/4"	1/8"	1"	2-1/4"	3°
PART # METRIC	SHANK DIAMETER	CUTTING DIAMETER	CUTTING EDGE LENGTH	OVER ALL LENGTH	DEGREE
P52252B	6 mm	3 mm	25 mm	76 mm	3°

GERBER SPECIALTY BITS



GERBER SPECIALTY

AUTO CARVE™ 3D CARVING BITS



Design considerations that impact tool selection:

Small, intricate graphics with thin stroke widths: Choose a tool with a steep angle; such as 90-degrees.

Large graphics with wide stroke widths: Choose a tool with a shallow angle; such as 150-degrees.

PART # ENGLISH	SHANK DIAMETER	CUTTING DIAMETER	TOOL DEGREE
P56371A	1/4"	1-1/4"	90°
P56372A	1/4"	1-1/4"	100°
P56373A	1/4"	1-1/4"	110°
P56374A	1/4"	1-1/4"	120°
P56375A	1/4"	1-1/4"	130°
P56376A	1/4"	1-1/4"	140°
P56377A	1/4"	1-1/4"	150°

Gerber V-cutting carbide bits deliver superb cut quality, maximum cutting efficiency, and the longest possible tool life. These specially designed tools are produced within tight manufacturing tolerances, ensuring the level of accuracy essential to the automated carving process.

GERBER SPECIALTY

BRAILLE/TACTILE BITS



These bits are used to create ADA (Americans with Disabilities Act) compliant signs. All have shank diameters of 1/4" (6.35 mm).

The Long Type for use with Dimension 200 and Sabre Engraver Options.

The Short Type has the same tip geometry as the Long Type, but are cut shorter for use in a Router Motor or High Frequency Spindle Option.

DESCRIPTION	LONG PART #	SHORT PART #	SHANK DIAMETER
Braille Cutter	P47763A	P47849A	1/4"
.015" Profile Cutter	P50624A	P50622A	1/4"
.06" Parallel Cutter	P50623A	P50625A	1/4"



Braille Cutter
for cutting Braille dots



.015" Profile Cutter
for cutting ADA sign borders and surface-mounted text



.06" Parallel Cutter
for cutting both letter clean-out pockets in the sign face and matching male characters for Auto-Inlay™ method.



GERBER SPECIALTY

TABLE SURFACING BITS



For use with a Router Motor or High Frequency Spindle. Its purpose is to mill the sacrificial table surface perfectly flat in respect to the Z axis and aid in precise depth control when cutting.

PART # ENGLISH	SHANK DIAMETER	TABLE MODEL
P52617A	1/4"	SABRE or PROFILE
P56327A	1/2"	AR600 or SABRE
P50569A	1/4"	Dimension 200

GERBER SPECIALTY GERBER ENGRAVING BITS



LONG TYPE

For use with top-loading engraving spindles.



SHORT TYPE

For bottom-loading collet systems and use with router motor or high frequency spindle option.

Gerber offers high quality, long and short type industry standard engraving bits. Designed to give excellent results with Gerber equipment, they also work with other routers/engravers. Gerber engraving bits are ideal for applications using ROWMARK®, acrylic, polycarbonate, and other plastic materials.

PART # ENGLISH	SHANK DIAMETER	CUTTING DIAMETER	LENGTH
P47767A	1/4"	.010"	Long
P47775A	1/4"	.060"	Long
P50536A	1/4"	.010"	Short
P50537A	1/4"	.020"	Short
P50538A	1/4"	.030"	Short
P50539A	1/4"	.060"	Short
P50540A	1/4"	.090"	Short
PART # METRIC	SHANK DIAMETER	CUTTING DIAMETER	LENGTH
P50544A	6 mm	.25 mm	Short
P50545A	6 mm	.50 mm	Short
P50546A	6 mm	.75 mm	Short
P50547A	6 mm	1.5 mm	Short

GERBER SPECIALTY COUNTER PLATE CUTTERS



SKIVE CUTTER



ENGRAVE CUTTER



CHANNEL CUTTER



4-FLUTE CHANNEL CUTTER

PART # ENGLISH	DESCRIPTION	SHANK DIAMETER	CUTTING EDGE LENGTH	ANGLE/ CED
P80156B	Skive Cutter	3/8"	3/8"	170°
P80157B	Skive Cutter	3/8"	3/8"	160°
P72108A	Engrave Cutter	1/4"	.060"	.010"
P80159B	Channel Cutter	1/8"	.045"	.045"
P80158B	Channel Cutter	1/8"	.060"	.060"
P78542B	4-Flute Channel Cutter for stainless steel	1/8"	.090"	.060"
P78541B	4-Flute Channel Cutter for stainless steel	1/8"	.060"	.045"

Ideal for cutting Phenolic Counter Plates and 1 mm Thin Plates.

GERBER SPECIALTY CHAMFER CUTTERS



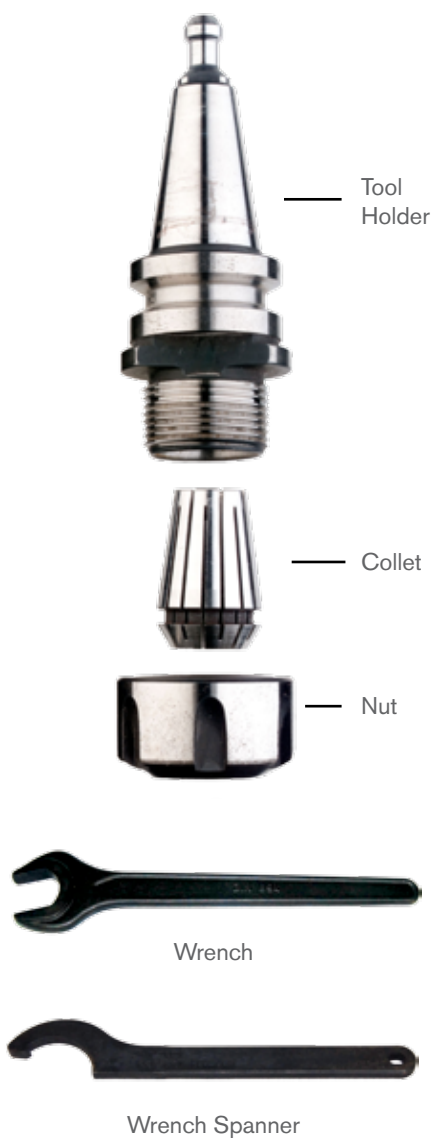
Router bits that allow you to rout a chamfer around blanker and stripping tools

PART # ENGLISH	SHANK DIAMETER	CUTTING DIAMETER	ANGLE
P72861B	1/2"	1"	90°
P56376A	1/4"	1-1/4"	140°
P56377A	1/4"	1-1/4"	150°



www.bciimage.com
866-971-1008

ACCESSORIES



MOTOR TYPE	PART #	DESCRIPTION	SIZE
Perske 7HP Spindle	P52549A	Collet	1/4"
	P52550A	Collet	1/2"
	P75886B	Collet Sleeve	1/8"
	P52548A	Nut	M27
	P52547A	Wrench Spanner	24 mm
	P52546A	Wrench	24 mm
Porter Cable	P48679A	Collet W/Nut	1/4"
	P48680A	Collet W/Nut	1/2"
	P75886B	Collet Sleeve	1/8"
3HP Spindle	P72353A	Tool Holder ER16	1/16" - 3/8"
	P72305A	Tool Holder ER20	1/16" - 1/2"
	P73422A	Collet ER16	1/8"
	P74647A	Collet ER16	3/16"
	P73425A	Collet ER16	1/4"
	P72238A	Collet ER16	9-10 mm (3/8")
	P72307A	Collet ER20	1/2"
	P72300A	Wrench Open End	22 mm
	P72348A	Spanner	30-32 mm
10HP Spindle	P78166A	Tool Holder	-
	P78255A	Collet	3/8"
	P78170A	Collet	3/4"



www.bciimage.com

866-971-1008



SABRE & PROFILE ACCESSORIES



Kerf Clean Blower
Nozzle



Pen
Assembly

Spindle Taper
Cleaner

Tool Taper
Cleaner



Swivel Knife

PART #	DESCRIPTION	SABRE	PROFILE
P50551A	De-Burring Tool	▪	▪
P50552A	GerberCool – Mist Coolant Fluid – 1 Gallon	▪	
P32433A	Pen - Ball Point, Black	▪	▪
P32432A	Pen - Ball Point, Blue	▪	▪
P32431A	Pen - Ball Point, Red	▪	▪
P75044B	Pen Assembly	▪	▪
P42255A	Swivel Knife Assembly, 1/2" Dia. Shank	▪	
P42254A	Swivel Knife Blade Replacement	▪	
P62836B	Tool Height Gauge, Sabre - Scratch Plate	▪	
P62041B	Work Clamp Knob, Sabre	▪	
P62510B	Work Clamp T-Nut, Sabre	▪	
P62039B	Work Clamp, Sabre	▪	
P72630A	Kerf Clean Blower Nozzle		▪
P73085A	Die Board 1/4" Alignment Pins		▪
P74532A	Die Board 3/16" Dowel Pin		▪
P73108A	Spindle Taper Cleaner		▪
P73109A	Tool Taper Cleaner		▪
P72257B	Z-Axis INIT Gauge		▪
P73561B	Kerf Cutter Depth Setting Gauge		▪
P73106A	Kerf Clean Assembly		▪

SABRE & PROFILE SPARE PARTS



PART #	DESCRIPTION	SABRE	PROFILE
P53729B	Pressure Foot Cushion, Twistlock	▪	▪
P72864B	Window – Vacuum Seal		▪
P56557D	Pressure Foot Twistlock 1/2" Dia.	▪	▪
P52399B	Window Vac Seal	▪	
P56556D	Pressure Foot Twistlock 1-1/5" Dia.	▪	▪
P73026A	Profile Press Filter		▪
P62589A	Vacuum Pump Filter	▪	▪
P71860C	Tool Clip for 3HP		▪
P65960C	Tool Clip for 10HP		▪



www.bciimage.com

866-971-1008

ABOUT GERBER TECHNOLOGY

Based in Tolland, Connecticut, Gerber Technology delivers industry-leading software and automation solutions that help apparel and industrial customers improve their manufacturing and design processes and more effectively manage and connect the supply chain, from product development and production to retail and the end customer. Gerber serves more than 78,000 customers in 130 countries, including more than 100 Fortune 500 companies in sign & graphics, apparel & accessories, home & leisure, transportation, and packaging. The company develops and manufactures its products from various locations in the United States and Canada and has additional manufacturing capabilities in China.

+ 1.800.826.3243 (USA)

+ 1.860.871.8082 (Outside USA)

www.gerbertechnology.com



Authorized Gerber Distributor

Alucobond, Dibond, Sintra, Fome-Cor, Gatorfoam, Gatorplast are registered trademarks of 3A Composites USA, Inc.

Avonite® is a trademark of Aristech Surfaces LLC

Corian® is a registered trademark of E.I. du Pont de Nemours and Company

Celtec and Polycarve are trademarks of Scranton Products, Inc.

Trovicel is a registered trademark of Roechling Engineering Plastics KG

Kometex is a registered trademark of Komemerling USA, Inc.

Signfoam is a registered trademark of Sign-Arts Products, Corp.

Precision Board is a trademark of Coastal Enterprises

Lexan is a registered trademark of Sabic Global Technologies B.V.

ROWMARK is a registered trademark of ROWMARK LLC

All other trademarks are the property of Gerber Technology.

© 2015 GERBER TECHNOLOGY. ALL RIGHTS RESERVED.